

Partita choralis

für Fagott solo

Komm, Gott Schöpfer, Heiliger Geist

Improvisation

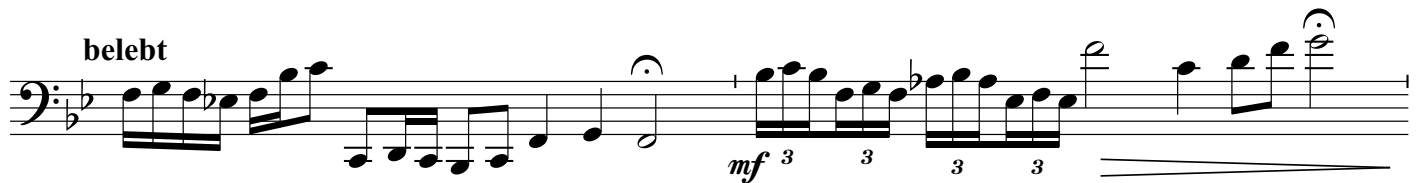
Lothar Graap

(*1933)

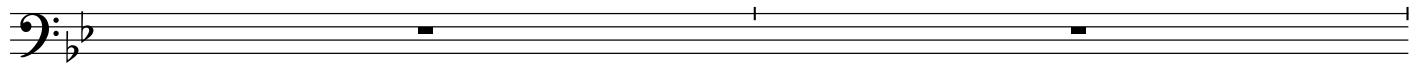
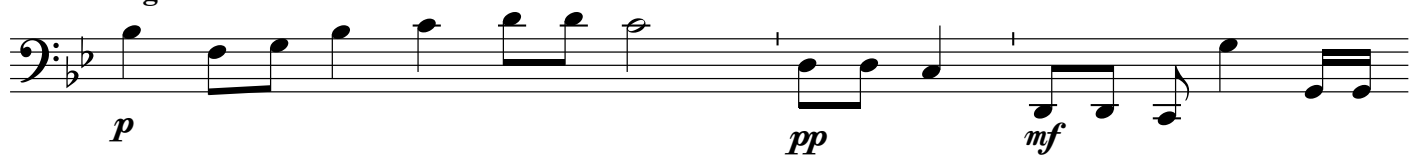
ruhig, etwas frei



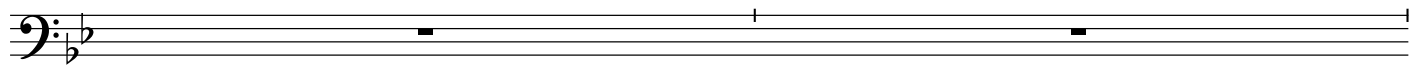
belebt



ruhiger



ruhiger



drängend



© 1999 / 2017 by

Sonat-Verlag (Edition Musica Rinata), Kleinmachnow, www.sonat-verlag.com

Jede Aufführung in Gottesdienst oder Konzert ist bei der GEMA meldepflichtig.

Alle Rechte vorbehalten. Jede Form der Vervielfältigung ist gesetzlich verboten (§106 UrhG).

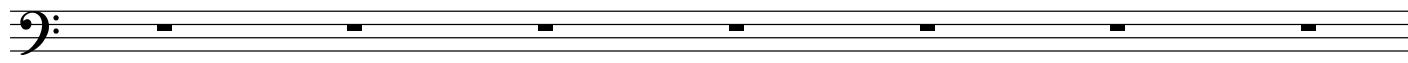
All rights reserved. Any reproduction is prohibited by law. Printed in Germany.

MR 5.086.00

In dich hab ich gehoffet, Herr

Toccatina

Sehr lebhaft



Wer nur den lieben Gott lässt walten

Cantus

Ruhige Viertel

First musical staff in bass clef, 4/2 time signature. It begins with a half rest followed by a half note G2, then a quarter note F2, E2, D2, C2, B1, A1, G1. The piece concludes with a half note G1, a quarter note F1, and a quarter note E1. Dynamics include *mf* at the beginning and *f* at the end.

Second musical staff in bass clef, 4/2 time signature. It begins with a quarter note G1, a quarter note F1, a quarter note E1, a quarter note D1, a quarter note C1, a quarter note B0, a quarter note A0, a quarter note G0. The piece concludes with a quarter note F0, a quarter note E0, a quarter note D0, a quarter note C0, a quarter note B0, a quarter note A0, a quarter note G0. Dynamics include *mf* and *pp*.

Empty musical staff in bass clef, 4/2 time signature.

Empty musical staff in bass clef, 4/2 time signature.

Sehr ruhig

Third musical staff in bass clef, 4/2 time signature. It begins with a quarter note G1, a quarter note F1, a quarter note E1, a quarter note D1, a quarter note C1, a quarter note B0, a quarter note A0, a quarter note G0. The piece concludes with a quarter note F0, a quarter note E0, a quarter note D0, a quarter note C0, a quarter note B0, a quarter note A0, a quarter note G0. Dynamics include *p*.

Fourth musical staff in bass clef, 4/2 time signature. It begins with a quarter note G1, a quarter note F1, a quarter note E1, a quarter note D1, a quarter note C1, a quarter note B0, a quarter note A0, a quarter note G0. The piece concludes with a quarter note F0, a quarter note E0, a quarter note D0, a quarter note C0, a quarter note B0, a quarter note A0, a quarter note G0. Dynamics include *p*.

Lobt Gott getrost mit Singen

Choral und Veränderung

Choraltempo

1.

mf

The first staff of the Choraltempo section is written in bass clef with a key signature of one flat (B-flat). It begins with a dynamic marking of *mf*. The melody consists of a series of eighth and quarter notes, followed by a first ending bracketed with a '1.' and ending with a repeat sign.

2.

The second staff continues the melody from the first staff, marked with a '2.' and a repeat sign. It features a series of eighth and quarter notes.

The third staff of the Choraltempo section shows a continuation of the melody with a few more notes and rests, ending with a double bar line.

Energisch

The first staff of the Energisch section is a bass clef staff with a key signature of one flat, containing several rests.

mf

The second staff of the Energisch section is written in bass clef with a key signature of one flat. It features a dynamic marking of *mf* and contains a series of eighth and quarter notes, including some beamed eighth notes.

f

f

The third staff of the Energisch section is written in treble clef with a key signature of one flat. It features a dynamic marking of *f* and contains sixteenth-note runs marked with a '6' (sixteenth notes), followed by a change to a bass clef staff with another *f* dynamic marking.

p

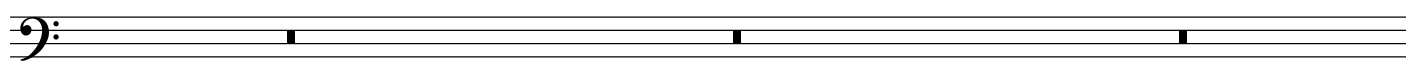
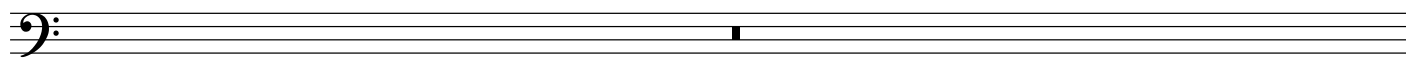
f

The fourth staff of the Energisch section is written in bass clef with a key signature of one flat. It features dynamic markings of *p* and *f*, and contains a series of eighth and quarter notes, including a sixteenth-note run marked with a '6'.

Befiehl du deine Wege

Arietta

Ruhige Viertel



sehr verhalten
ausklingen lassen

